

CRAFT & DRILL

Chaining Fries FIRST GRADE SET



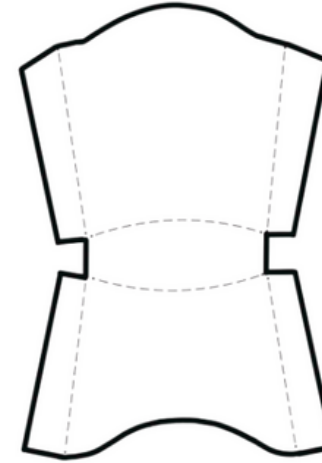
Directions

This set of resources follows the order of the IMSE first grade scope and sequence.

For longest lasting durability, print on cardstock. Have students cut out the fry box template on the following page along the solid lines. Fold along the dotted lines. Glue the flaps on the left and right sides together. Cut out fry shapes along the solid lines.

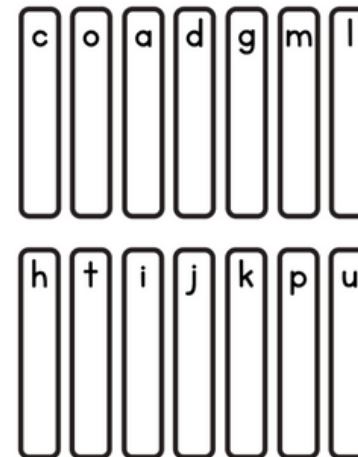
Choose several previously learned concepts to review with students. Organize a list of words in a chaining list, changing out one grapheme at a time. (For example: mad, bad, sad, sat, mat). Have students spread out their fry box and fry cards on a desk or table. Call out a word from your list. Have students tap out the word, then build the word in their fry box with their fry cards. Call out the next word on your list and have students tap out the new word. Tell them to change one fry to make the new word. Repeat until all words in your exercise have been spelled.

© Institute for Multi-Sensory Education



© Institute for Multi-Sensory Education

© Institute for Multi-Sensory Education



CARD GAMES

Brain Blender FIRST GRADE SET



Directions

This set of resources follows the order of the IMSE first grade scope and sequence.

For longest lasting durability, print on cardstock. Cut out along the black lines.

This game is similar to the game "Heads Up". Two players work together as a team. Select concepts to review and put cards into a pile, facing downward.

Assign one student (Player 1) the "blender" role, and one student (Player 2) the "mind reader" role. Set a timer for one minute. Player 1 should pick up a card from the pile without looking at the word, and hold it on his or her forehead with the text facing Player 2. Player 2 will say each sound in the word (segmented "/m/, /a/, /p/") clearly without blending the word. Player 1 should blend the word as quickly as possible ("map") and put the word into a new "finished" pile. If the word is read incorrectly, students should keep trying until they read the word accurately. Repeat this process as quickly as possible until the timer is runs out. Count how many words the students read correctly together and challenge them beat their score by reading the cards even faster in the next round. Have players switch roles each round.

© Institute for Multi-Sensory Education



BOARD GAMES



Word Detective (BINGO)

Set 1 Words: pigpen, sunset, bathtub, dishpan, cannot, catfish, bobcat, Batman, napkin, picnic, velvet, magnet, hiccup, mitten, public, tablet, cactus, basket, witness

Set 2 Words: huff, puff, whiff, off, doll, well, will, tell, fell, sill, fill, mill, bell, bill, sell, hill, mess, sass, pass, kiss, miss, hiss, fuss, mass, chess, fuzz, jazz, buzz, fizz

Set 3 Words: be, no, go, she, he, hi, me, so, lotus, raven, open, zero, bonus, basic, pilot, humid, hotel, pupil, oval, modem, evil, hero, Roman

Set 4 Words: brag, brush, cram, crib, frog, fresh, grab, grill, prop, press, drip, drum, trap, trot, strip, strum, shrub, shred, throb, scrap, scrub, blot, blab, clap, clip, flop, fled, glad, glop, plum, slip, slot, split, splash, scan, scuff, skip, skull, smell, smog, sniff, snob, spell, spot, stuff, stop, squish, squid, dwell, swim, swell, twig, twin

Set 5 Words: sect, belt, fact, duct, left, loft, tilt, went, pant, next, kept, must, gulp, kelp, silk, bulk, self, shelf, held, meld, hand, bind, mask, desk, wisp, clasp, pump, lamp, pinch, lunch, ranch, hunch

Set 6 Words: sting, king, swing, bring, fang, hang, sang, bang, song, strong, long, gong, clung, stung, swung, lung, sink, think, shrink, drink, thank, bank, plank, prank, honk, bonk, trunk, chunk, trinket, ringlet, inkling, plankton



Word Detective

Set 1
Concepts Compound Words & VC/CV
Board 1



pigpen	sunset	bathtub	dishpan
cannot	catfish	bobcat	Batman
napkin	picnic	velvet	magnet
hiccup	mitten	public	tablet

