

NES/IMSE Complete Virtual Classroom Instruction Manual

Congratulations on your purchase of the Complete Virtual Classroom created by Newman Education Services with help from the Institute for Multi-Sensory Education.
. This guide has been provided to walk you through how to use this PowerPoint Presentation day-to-day and how to edit the presentation.

Please read “[Getting Started](#)” or view the [Getting Started Youtube Video](#) before using this product.

Table of Contents

Getting Started.....	3
Navigating your Classroom	6
Homeroom	6
Posterboard	7
Computer	7
Flashcards	8
Auditory Kinesthetic Drill.....	9
Blending Board	9
Vowel Intensive.....	10
Brainstorming.....	10
Objects	11
Syllabification.....	13
Dictation	16
Decodable Readers.....	17
Letter Formation	18
Personalize Your Classroom.....	19
Adding Your Bitmoji	19
Adding Posters	20
Adding a New Video	20
Adding Decodable Readers.....	21
Adding your own Phoneme/Grapheme Pictures	21
Adding (or editing) Slides.....	22
Adding or changing decorations	22
Adding new slides.....	22
Changing slides that are built-in	22
Troubleshooting	23
Appendix.....	25
List of Syllable Division Lessons	25
List of Phoneme/Grapheme Pictures	31

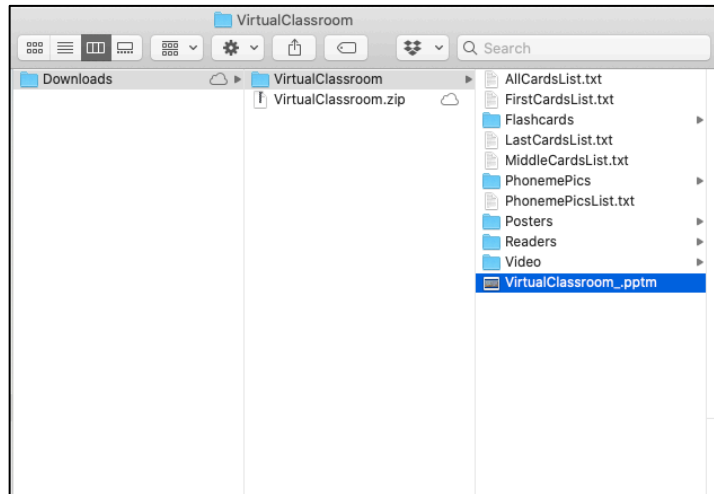
Getting Started

Please review all steps before opening your PowerPoint presentation. A video version of this instruction can be found [here](#).

1. Open your Virtual Classroom

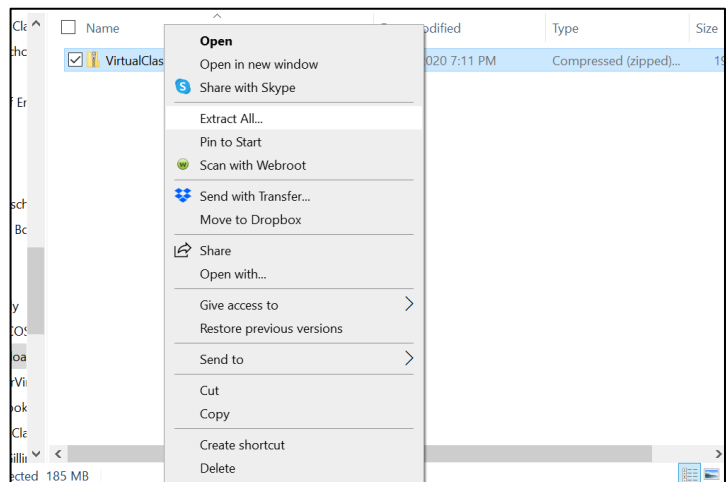
On Mac:

You will need to open the compressed zip file you downloaded to view its contents. From there click on *VirtualClassroom_1_0.pptm*



On Windows:

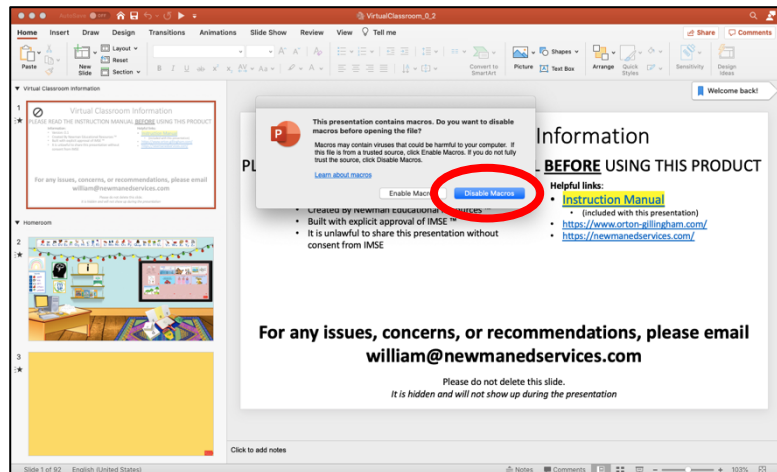
You will need to *right-click* the compressed zip file and select "Extract-All". Next hit "Extract" and navigate to your extracted folder. From there click on *VirtualClassroom_1_0.pptm*



2. Enable Macros

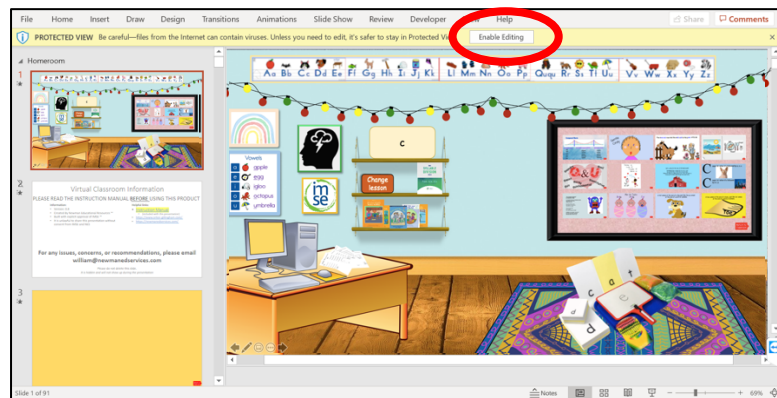
On Mac:

A popup will appear asking if you want to disable or enable macros. You **MUST** press “Enable Macros” to fully utilize the features on this slide deck.



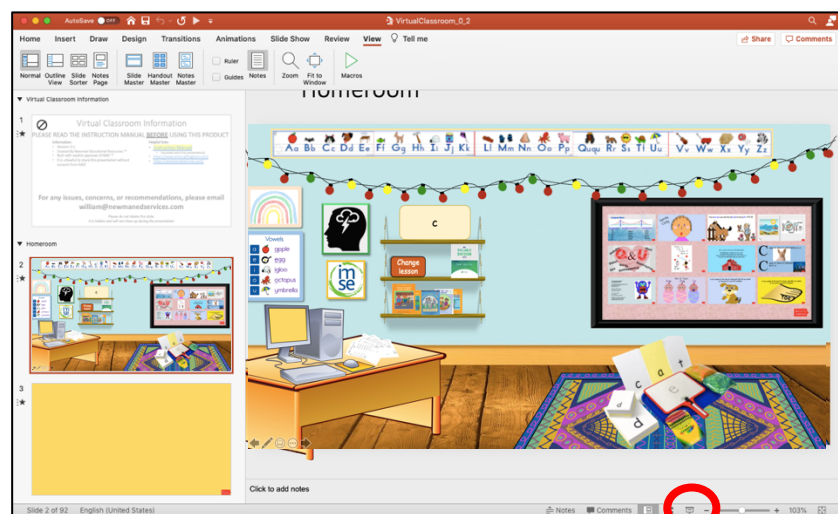
On Windows:

You will see a yellow ribbon at the top of the presentation that asks if you would like to “Enable Content”. You **MUST** hit this button **both times** it comes up to fully utilize the features on this slide deck.



3. Start The presentation

Click on your “Homeroom” slide. Then either click on the start bottom at the bottom of PowerPoint or Hit *View>Play From Start* in the ribbon at the top.



4. Click the “Change Lesson” button on the shelf on the wall to start

You will be directed to a rainbow page that lists all of the available phoneme/grapheme lessons. Simply select the lesson you want on this slide to initialize the classroom for the day.

1: c	2: o	3: a	4: d	5: g	6: m	7: l	8: h
9: t	10: i	11: j	12: k	13: p	14: ch	15: u	16: b
17: r	18: f	19: n	20: e	21: s	22: sh	23: th (voiced)	24: w
25: wh	26: y (consonant)	27: v	28: x	29: z	30: th (unvoiced)	31: qu	32: -ff, -ss, -zz
33: _r	34: _l	35: s_	36: _w	37: -_t	38: -l_	39: -mp,-nch,-nd,-sk,-sp	40: _ng
41: _nk	42: -ed	43: e (magic)	44: ph	45: ck	46: ea	47: oa	48: ai
49: ee	50: ay	51: oe	52: er	53: ir	54: ur	55: ow	56: ou
57: igh	58: -_le	59: ar	60: or	61: oo	62: y (vowel)	63: c_	64: g_
65: -dge	66: aw	67: au	68: oi	69: oy	70: tch	71: ew	72: eu
73: ei	74: ie	75: ue	76: tion	77: sion	78: -ey	79: -ous, -us	Return to Classroom

Note for Mac Users: If you are using

PowerPoint for mac you will see additional prompts asking for access to the contents within the Virtual Classroom folder. You must hit “Grant Access” Twice each time this pop-up appears. *You will only have to do this the first time your computer needs access to any of the files within the Virtual Classroom Folder*

5. Start your lesson

Read the rest of this document for help [navigating your classroom](#), [personalizing your classroom](#), or [troubleshooting](#) any issues you run into.

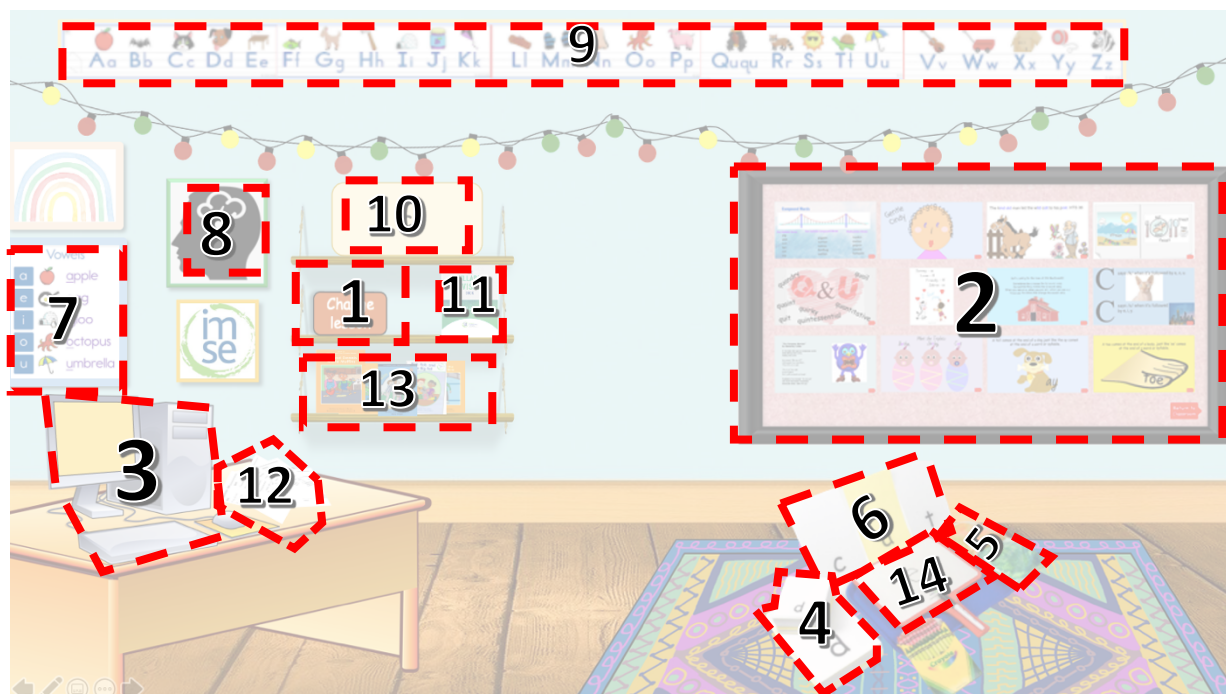
You may press esc on the keyboard at any time to exit the presentation.

Navigating your Classroom

Welcome to your brand-new hub for virtual teaching with Orton Gillingham. In this section we will show you the various features in your classroom and how to navigate throughout it.

Homeroom

This is your landing page for every lesson. Outlined below is each clickable part of the room and where it will take you. Clicking in this order is not required.



1. **CHOOSE LESSON**: Click this to start the lesson for the day.
2. **POSTERBOARD**: will take you to a posterboard displaying up to 12 posters
3. **COMPUTER**: takes you to a page displaying the selected video within the *Videos* folder
4. **FLASHCARDS**: will begin the flashcards exercise based on the lesson number
5. **AUDITORY KINESTHETIC DRILL**: a basic page for the auditory kinesthetic drill
6. **BLENDING BOARD**: start the blending exercise based on the lesson number
7. **VOWEL INTENSIVE**: a basic page for the vowel intensive
8. **BRAINSTORMING**: a basic page for brainstorming on the day's phoneme/grapheme
9. **OBJECTS**: show the student pictures containing the day's current phoneme/grapheme
10. **THE PHONEME/GRAPHEME OF THE DAY**: clicking this allows the user to select a new phoneme/grapheme/lesson number at any time
11. **SYLLABIFICATION**: takes the user to a page with helpful syllabification slides
12. **DICTATION**: a page containing counting fingers to help with dictation worksheets.
13. **DECODABLE READERS**: A page with links to the various decodable reader PDFs (These must be purchased separately)
14. **LETTER FORMATION**: A page with the first 29 lessons written in uppercase and lowercase

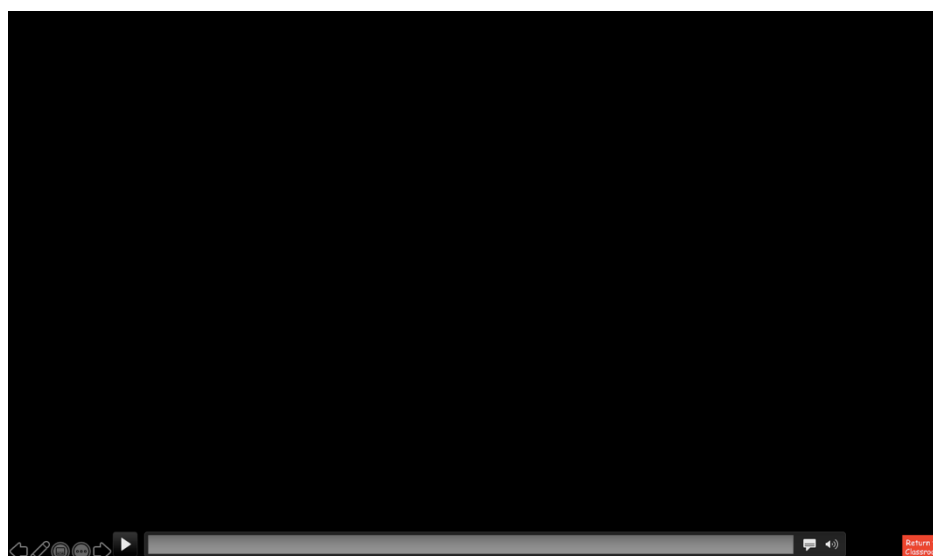
Posterboard

In your homeroom you will always be able to see this posterboard. To refresh this board with any new posters from the *Posters* folder, you will need to hit the IMSE logo in the classroom and then click the posterboard to refresh the posters. Go to the [Adding Posters](#) section below for more information on adding posters. Click anywhere on the board in the classroom to bring up a larger view. You can then either hit *Return to Classroom* to return to your classroom, or click on any of the posters to get a closer look.



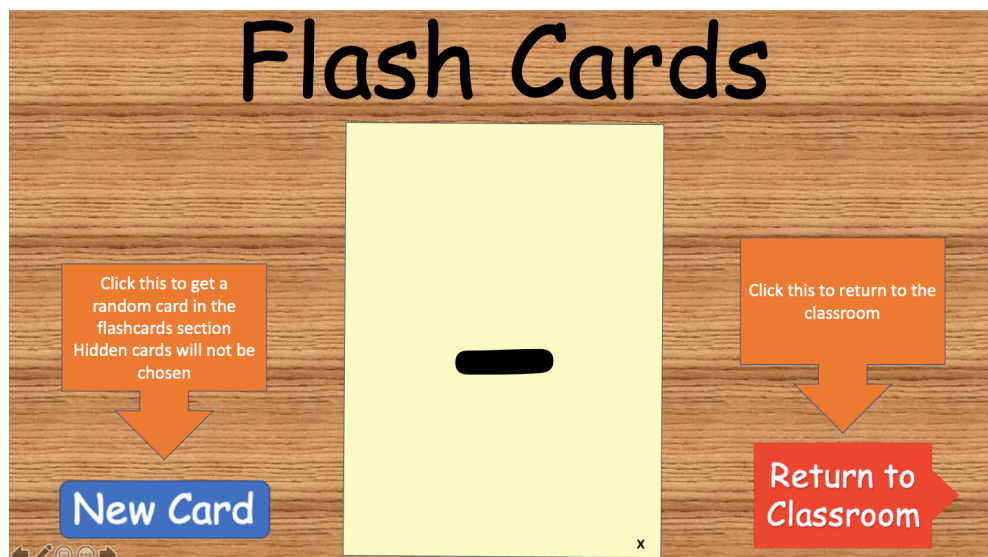
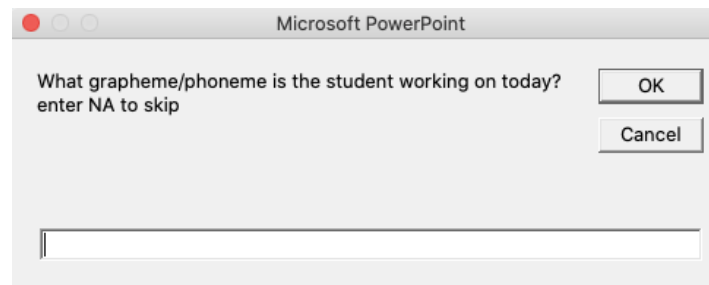
Computer

This slide will present whatever video you have selected from the *Video* folder. For instructions on adding a new video go to the [Adding a New Video](#) section below. Simply hit the play button in the bottom left-hand corner to start the video, and press the red *Return to Classroom* button at any time to exit



Flashcards

This is an instructional slide before starting the flashcards program. Pressing the blue *New Card* button will display a random card between lesson 1 and the lesson that you chose when starting the presentation. These cards are in the *Flashcards/All* folder supplied with the presentation. Press the red *Return to Classroom* button at any time to stop this exercise.

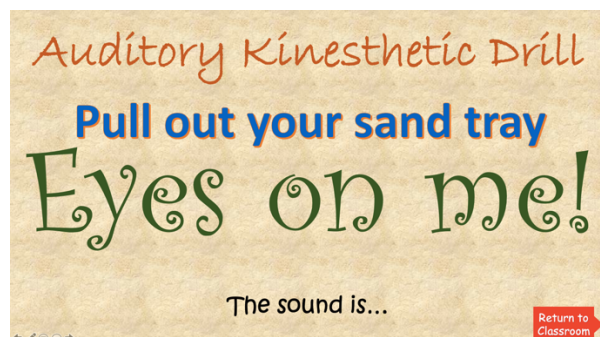


Note for Mac Users:

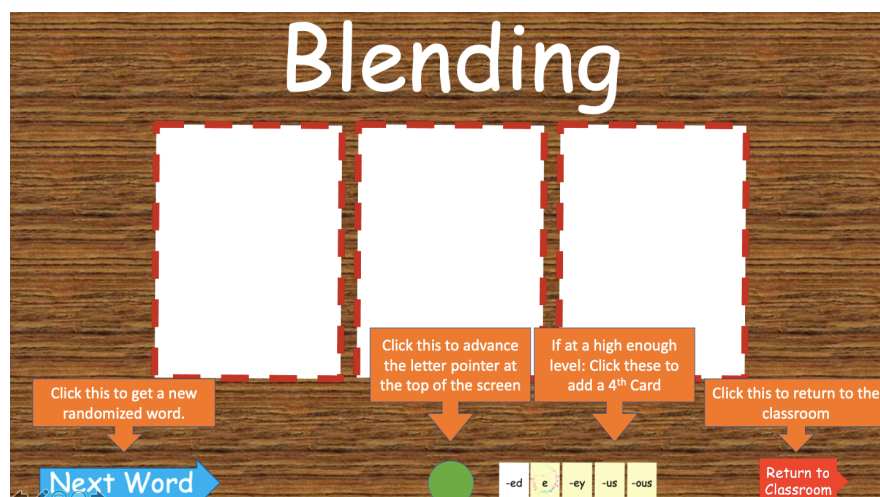
If you are using PowerPoint for mac you may see additional prompts asking for access to the contents within the flashcards folder. You must hit "Grant Access" Twice each time this pop-up appears. *You will only have to do this the first time your computer needs access to any of the cards within Flashcards Folder.*

Auditory Kinesthetic Drill

This slide is only here to provide the instructions for beginning the auditory kinesthetic drill. Simply press the *right-arrow* key or click anywhere on the slide to advance the animations. Press the red *Return to Classroom* button to return to the classroom at any time.



Blending Board



This is an instructional slide before starting the blending program. Pressing the blue *Next Word* button will display a randomly created word with cards between lesson 1 and the lesson that you chose when starting the presentation. These cards are in the *Flashcards/Initial*, *Flashcards/Medial*, and *Flashcards/Final* folders supplied with the presentation.

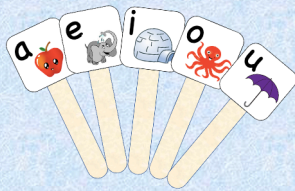
- The green circle at the bottom of the page will advance the letter pointer at the top if you would like to sound out each card.
- If you are at lesson 42 or *higher* the *-ed card* will be visible at the bottom of the page; press it to add *-ed* in the fourth position of any word.
- If you are at lesson 43 or *higher* the *magic e card* will be visible at the bottom of the page; press it to add the magic e in the fourth position of any word.
- If you are at lesson 78 or 79 the 3 *suffix cards* (*-ey*, *-us*, *-ous*) will be visible at the bottom of the page; press any of them to add that suffix card in the fourth position of any word.
- Press the red *Return to Classroom* button at any time to stop this exercise.

Vowel Intensive

This slide is only here as a visual cue for the vowel intensive. Hit the *Return to Classroom* button to return to the classroom from this slide.

V	VC	CVC
a	ast, amp, and, act	blask, scant, spant, slamp
e	est, esk, ent, ench	clomp, threst, stelk, tremp
i	ilt, ilf, ift, isk	thrish, slint, stimp, spist
o	omp, oft, osh, ond	sprost, flosk, stom, blont
u	uth, und, ump	drush, flund, spult

Vowel Intensive



[Return to Classroom](#)

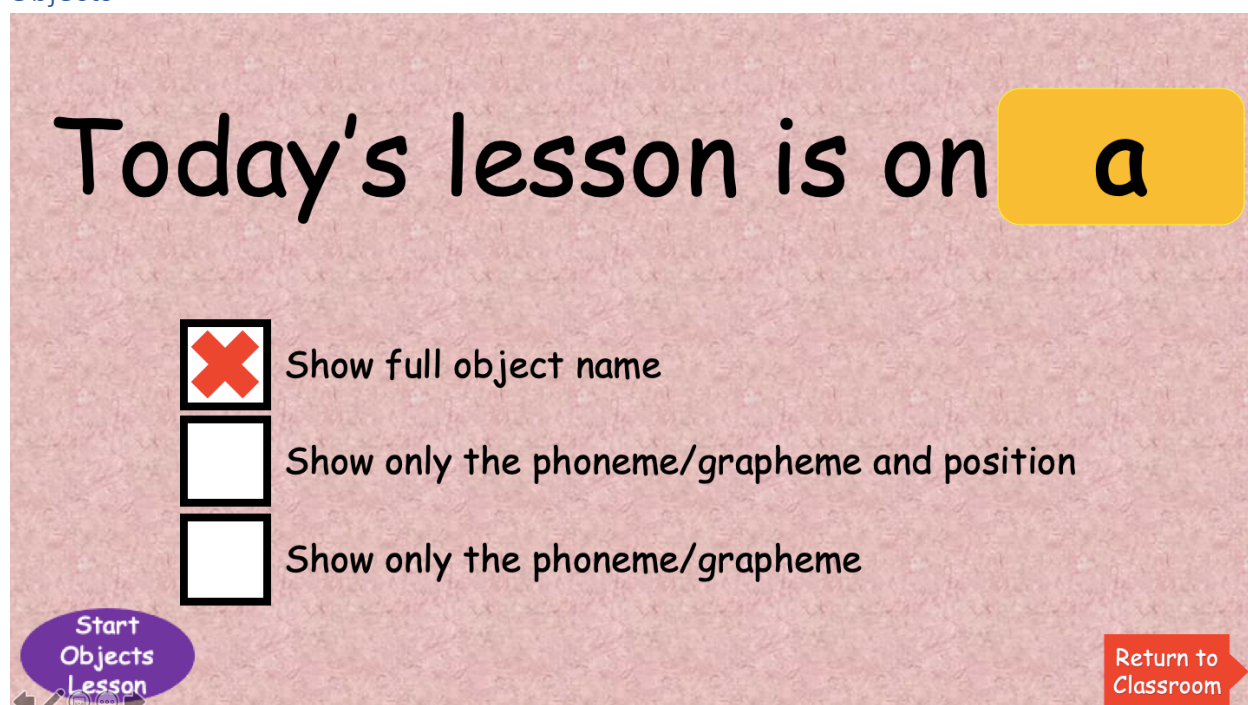
Brainstorming

This slide can be used as a whiteboard for brainstorming new words for the day's lesson. In order to access PowerPoint's built-in pen feature simply click on the pen in the bottom left corner of the screen and select *Pen* to get a pen for drawing on this page. You can also press control P (or Command P on a mac) to select the pen tool. When you are finished drawing return to the pen menu and select *Automatic* to get your cursor back.

Brainstorm

i

[Return to Classroom](#)



This is the landing page for the objects lesson. You can press the yellow phoneme/grapheme rectangle in the top right corner of the screen to select a new phoneme/grapheme for the lesson if you wish. You can then enter either a lesson number or the phoneme. Include dashes for final phonemes (i.e -nt instead of just nt).

Once you hit the *Start Objects Lesson* button in the lower left side of the screen images from the *PhonemePictures/*chosen phoneme** folder will be displayed in a random order (where **chosen phoneme** is the phoneme displayed in the yellow phoneme/grapheme rectangle in the top right corner of the screen). To add/remove/edit these images please visit the section: [Adding your own Phoneme/Grapheme Pictures](#). To see a full list of objects, see the [Appendix](#).

There are three options you may select from on this landing page:

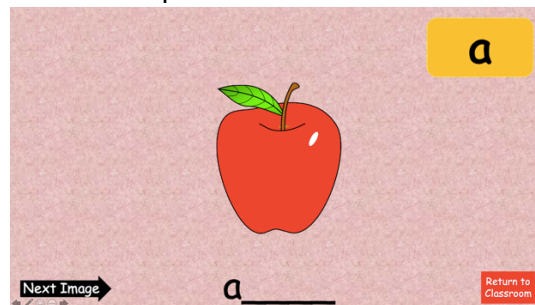
1. Show full object name

This option will make it so the objects displayed will be above the name of the object (i.e. the name the photo was saved as). The phoneme/grapheme for that object will be underlined for emphasis. See the example below:



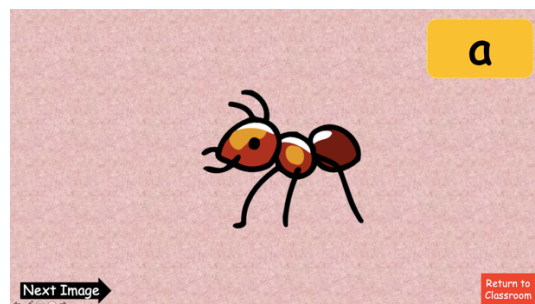
2. Show only the phoneme/grapheme and position

This option will make it so the objects displayed will be above a placeholder for the name of the object (i.e. the name the photo was saved as). The phoneme/grapheme for that object will be displayed between underscores to provide the location of the phoneme/grapheme. See the example below:



3. Show only the phoneme/grapheme

This option will display the objects without any information of the object's name. See the example below:



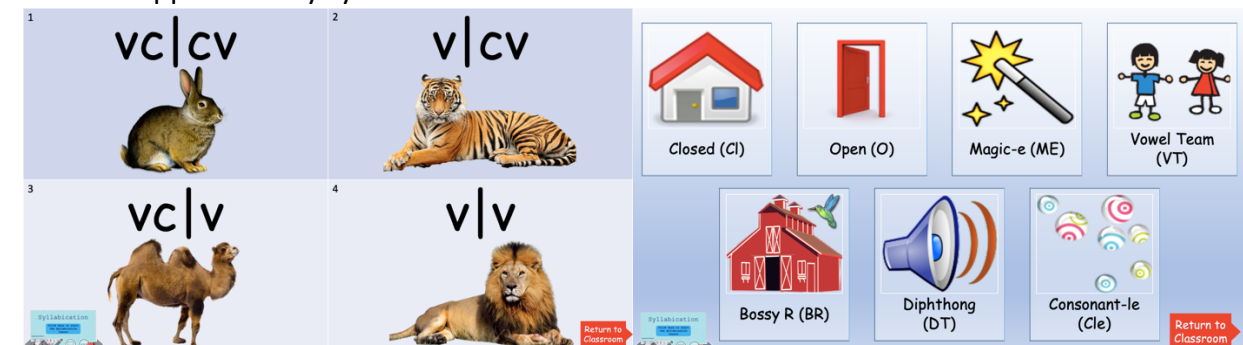
Syllabification

Click here to start the Syllabication lesson

Supplementary Material:

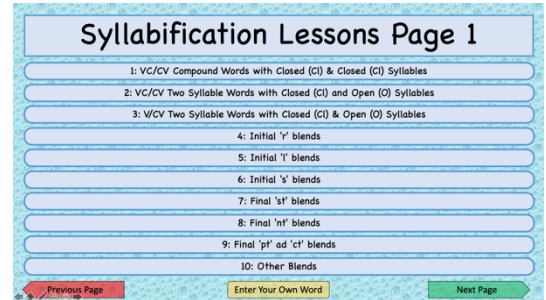


This is the landing page for the syllabication exercise. It is based on the “Syllable Division” book published by IMSE ([Available on their website here](#)) To begin a syllable division lesson simply click on the blue box in the center of the screen to initialize the exercise. On this page you can find two supplementary syllable division slides as well:

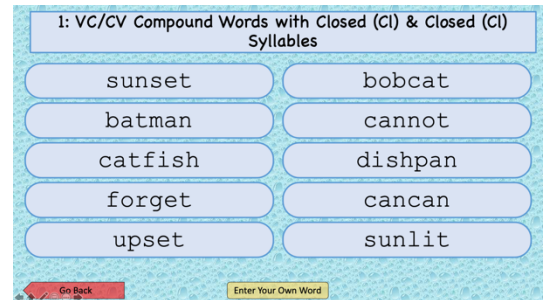


Click on any of the animals to reveal their vowel split

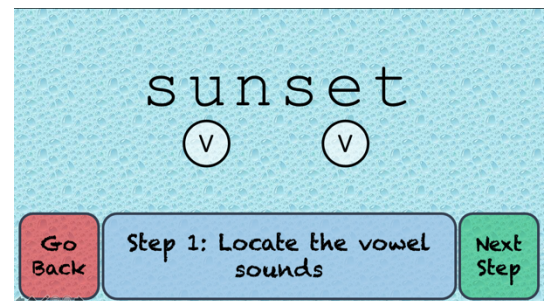
- After starting the exercise you will be directed to a page with the first 10 Syllabification lessons. You can either Select a lesson, go to the previous page, go to the next page (with 10 more lessons), or enter your own word.



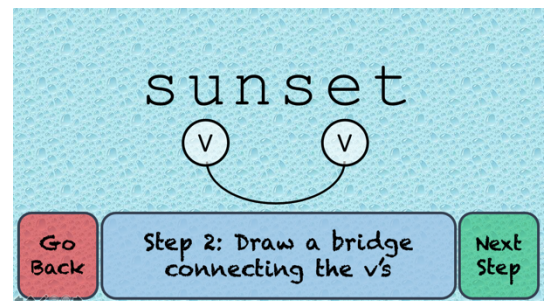
- Once you choose a lesson you can then pick any of the 10 example words to insert it into the slides



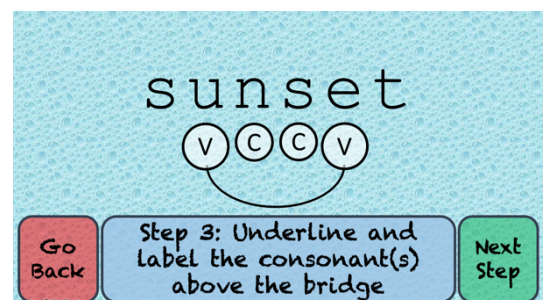
- After a loading screen, you will come to the first step: locate the vowel sounds". At any time for each step you can either go back or continue to the next step.



- Step two is to draw a bridge connecting the two v's



- Step 3 is to underline and label the consonant(s) above the bridge.



4. Step 4 is to divide the word into syllables.

Go Back Step 4: Find pattern and divide word into syllables Next Step

5. Step 5 is to label each syllable type. See the supplementary slides if you forget the abbreviations for the syllable types.

Go Back Step 5: Label each syllable type Next Step

6. Step 6 is to read each syllable independently. You can click on the grey box to switch the syllable being covered.

Go Back Step 6: Read each syllable Next Step

7. The final step is to read the full word. At this point you can either return to step 1 and go through the word again, or pick a new word.

Go Back Step 7: Read full word Return to Step 1 New word

There are also three-syllable words available. For these there is a menu on the left side of the page that lets you work on either the first two syllables, the last two syllables, or all three syllables. The IMSE curriculum recommends doing all three of these processes for each three-syllable word.

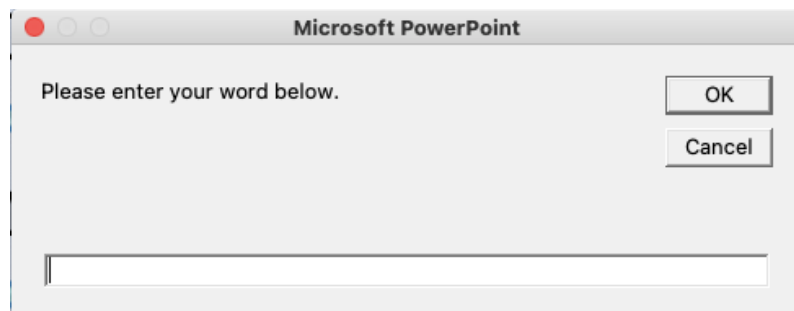
First 2 syllables
Second 2 syllables
All 3 syllables

Go Back Step 1: Locate the vowel sounds Next Step

To enter your own word prese the yellow “Enter your own word” button at the bottom of the page and then enter your word using the following format:

XXX|YYY xx yy
Or
XXX|YYY|ZZZ xx yy zz

Where XXX, YYY,and ZZZ are the 1st, 2nd, and 3rd syllables (they can be any length less than 6) and xx,yy,zz are their respective syllable types (these have to be the shortened version, less than 5 letters each)



A screenshot of a Microsoft PowerPoint window. The title bar says "Microsoft PowerPoint". The main area contains the text "Please enter your word below." and a large empty text box. To the right of the text box are two buttons: "OK" and "Cancel".

Dictation

This page is here as a visual cue for students to begin the *dictation* exercise for the day. On this page you can see the finger tapping hands for the students. Click on either hand to play a helpful counting animation.



The interface has a wooden background. At the top left, the word "Dictation" is written in large white letters. Below it is a yellow button with the text "Find today's dictation sheet". In the center are two cartoon hands, each with fingers numbered 1 to 3. To the right is a white sheet of paper titled "Lesson Dictation" with a "Name:" field. The sheet has sections for "Words" (5 numbered lines), "Rewrite" (5 numbered lines), "Sentences" (5 numbered lines), and a "Transcription" section with "Words" and "Sentences" columns. A red button at the bottom right says "Return to Classroom".

Decodable Readers

This slide is here to provide links to the decodable readers PDFs (Sold Separately). Simply press on the reader set you would like to open the decodable readers. Press the *Return to Classroom* button to return to the classroom at any time.

See the section [Adding Decodable Readers](#) below for help adding these links to your presentation.

NOTE: On some computers the PDFs will open without ending the presentation. If you click a link and nothing happens, you must end the presentation (*press esc* on your keyboard) and navigate to your PDF reader where the readers have been opened.



Return to
Classroom

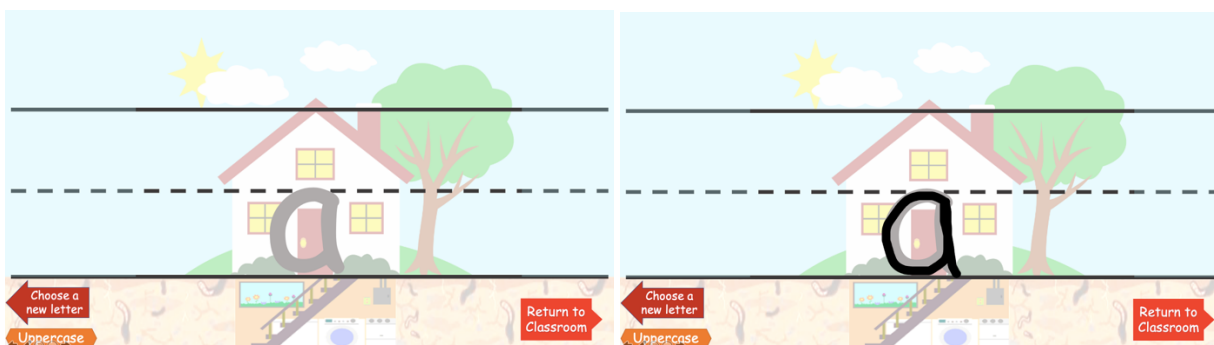
Letter Formation

The letter formation slides contain links to a slide for each of the first 29 graphemes/phonemes.



You can toggle between uppercase and lowercase using the orange button in the lower left-hand corner of the main slide. You can Return to the classroom from any *Letter Formation* page by pressing the red *Return to Classroom* button in the lower right-hand side of the slide.

Pres on any of the phonemes/graphemes to open that specific lesson's letter(s) in front of a house with a basement and attic.



On this page you can press anywhere on the background to start an animation of a pen properly outlining the letter. You can restart the animation as many times as you wish.

You can toggle between uppercase and lowercase using the orange button in the lower left-hand corner of these slides as well.

Return to the letter selection page by pressing the dark red *Choose a new Letter* button in the lower left-hand corner of the slide.

You can Return to the classroom from any *Letter Formation* page by pressing the red *Return to Classroom* button in the lower right-hand side of the slide.

Personalize Your Classroom

This virtual classroom has been built with customization in mind. There are ways to alter any of the slides to best fit your needs: you can [add a Bitmoji](#), [swap out posters](#), [swap out the video of the day](#), [add decodable readers](#), [change objects pictures](#), and [add to or edit the slides](#).

Please use the following guides to help you personalize your classroom without breaking any of the built-in features.

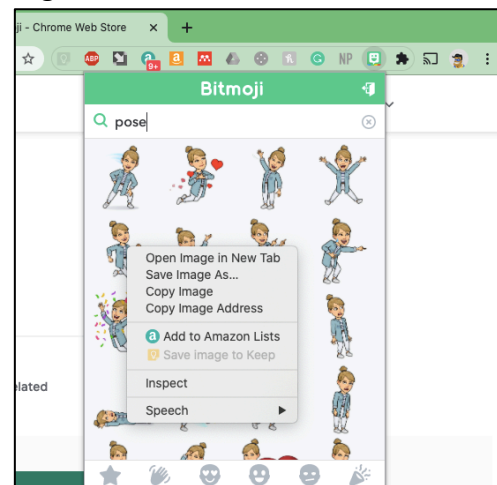
Adding Your Bitmoji

For a personal touch, you may want to add a Bitmoji to your classroom. Follow these steps to create and import a Bitmoji on your own!

1. Create your Bitmoji by downloading the Bitmoji app to your phone and creating an account.
2. Download the [bitmoji chrome extension](#)
3. Click on the extension at the top of your browser and type “pose” to get a list of Bitmojis
4. Right-click on a pose you like, select “Copy Image”
5. Open your virtual classroom page, in the menu bar go to Edit>Paste (you can also right-click and then select Paste Item)
6. Drag your Bitmoji wherever you’d like!

Important Notes:

- Don’t cover any slide links
- Don’t add to slides with images that change (Poster pages, Video page, Blending board, Flashcards, or Objects)
- You may want to crop your Bitmoji if it is covering a button in your classroom (the crop tool is in the picture format tab)



file

Adding Posters

Provided with this slide deck are 12 official IMSE posters to get you started in your virtual classroom. Follow these steps to switch out these posters at any time.

1. Download poster(s) as PDFs
2. Add the poster(s) to the *Posters* folder
3. Move unnecessary posters to another folder
4. Start the presentation and press the *IMSE logo* to update your class with the new posters.

Important Notes

- Only 12 posters will work at a time
- You may need to open the posterboard slide in order to refresh the posters.
- If you use a PDF with multiple pages, only the first page will appear on the posterboard
 - [This site](#) will let you split multi-page PDFs for free

Adding a New Video

The virtual classroom comes with the QU-song by the Bazillions on the video page. To add an additional video please follow these steps.

1. Download the video to your computer
 - a. If you want to use a YouTube video there are free websites that can be found online. Google “Youtube video download” to find one of these websites.
DISCLAIMER: NES/IMSE takes no responsibility for any harmful websites you visit. Please use caution when navigating these sites.
2. Move the video to the *Videos* folder within your *Virtual Classroom* folder
3. Press the *IMSE logo* in the classroom while presenting to select the new video.

Important Notes

- You can add multiple videos to this folder, but you will have to select which one you want when starting the lesson
- Not all video formats will work, try to use mp4 formatted videos for the best results.

Adding Decodable Readers

Many teachers use the IMSE provided decodable readers to help student create literary connections between new sounds and stories. These decodable readers are not included with your purchase of the PowerPoint virtual classroom, but can be utilized with the classroom nonetheless. Follow these steps to ensure the readers are accessible from your classroom.

1. Download the Decodable Readers PDFs from the IMSE website
2. They should still have their original names; ensure they are named as follows (you can right-click>rename the files if their names are incorrect):
 - a. IMSEDecodableReadersSet1.pdf
 - b. IMSEDecodableReadersSet2.pdf
3. Move the reader(s) to the *Readers* folder in the *Virtual Classroom* folder.

Important Notes:

- At the time of releasing this classroom only the first 2 decodable reader sets have been released. New versions of the classroom will include any new decodable reader sets that have been released.
- The Decodable readers will open in an external PDF reading program, so you may need to end the presentation in order to see their contents.
- The readers must be named properly in order to open via the quick links on the slides

Adding your own Phoneme/Grapheme Pictures

Included with your virtual classroom is a series of folders containing pictures for all 79 lessons (139 phonemes/graphemes!). These pictures are what is displayed when you use start an objects lesson in the classroom. If you would like to use your own pictures, or remove pictures you do not like, follow these steps.

1. Find a new picture
 - These pictures can be personal, or from online, but should be either .png or .jpg file formats.
2. Save the picture as the object's name
 - The objects name **MUST** include the correct phoneme/grapheme in order to be displayed correctly
3. Move the picture to the correct folder for that phoneme/grapheme
 - All of the phoneme/graphemes have folders within the *Phoneme/Grapheme* folder in the *Virtual Classroom* folder.
4. Remove any pictures you do not want to show up

Important Notes:

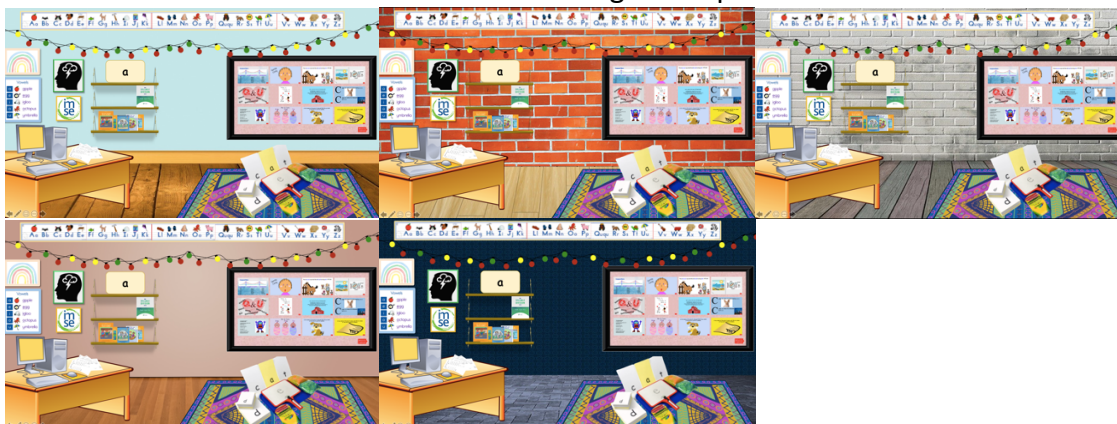
- The picture formats can only be .png or .jpg
- You can not add additional phoneme/grapheme folders for images
- The pictures must be named properly in order to be displayed properly
- The picture size does not matter
- .jpeg files will not work properly

Adding (or editing) Slides

This virtual classroom is **yours**! If you want to make it look like your own by changing fonts/ adding new furniture or decorations, adding slides that you think will be helpful, etc, then you can do that! This section will outline things to look out for when customizing your classroom.

Adding or changing decorations

- There are multiple walls/floors built-in the presentation. Simply right-click the wall or floor and hit “Send To back” to alternate through the options:



- Do not cover up any buttons
- If you are swapping something use the “Change Picture” option from the right-click menu
- Bring to front and Send to back are your friends (also on the right-click menu)
- If you remove a clickable object or button on accident and cannot retrieve it, please contact william@newmanedservices.com for assistance

Adding new slides

1. Add a slide wherever you’d like!
2. Add an image to the homeroom to use as a button for navigating to that slide
3. Right-click on that object and select “Add hyperlink” then choose your new slide.
4. Copy-and-paste the *Return to Classroom* button from any other slide

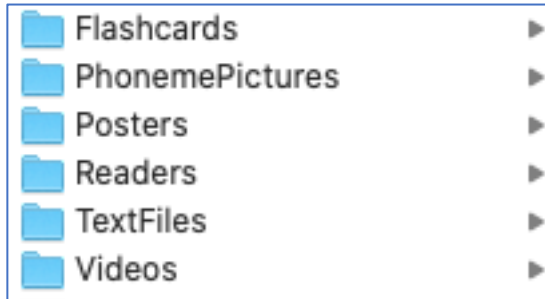
Changing slides that are built-in

Poster pages, Video page, Blending board, Flashcards, and Objects pages have code running in the background! Do not (significantly) change these slides! If you must make small adjustments:

- Do not change any buttons
- Do not remove any objects from these slides
- Do not edit the Macros on these slides
- There is a chance these slides will delete any new shapes when running the presentation, so edit at your own risk!

Please make changes to these slides **at your own risk**. There is a multitude of ways to screw up the code on these slides and some mistakes may be **permanent**.

Troubleshooting

- *Nothing is working!* Clicking the IMSE button is not bringing up any prompts. A few different problems may cause this, check the following list for possible causes
 - Are you on the cloud? The Macros will not have access to your cloud file locations, meaning it will not be able to reach the folders it needs to run. Move the *VirtualClassroom* folder to a local location (i.e. your Desktop) and try again.
 - Make sure you have *started the presentation*. The Macros will only run if the presentation is open and started.
 - Macros may have been disabled, reopen the presentation and hit *Enable Macros* or *Enable Content*.
 - *Not seeing these prompts?* Check this guide for enabling all macros:
 - [Windows](#)
 - [Mac](#)
- When I try to use the blending board or flashcards, I get a popup that says something along the lines of **“No flashcards folder found”**
 - This is likely because you have not properly started your presentation. Hit the IMSE logo in presenter mode to select the levels for flashcards and the blending board.
 - This popup may also mean the PowerPoint is not in the proper folder. You can **not** move the PowerPoint presentation out of the *“Virtual Classroom”* folder. To fix this issue move the presentation back to the *“Virtual Classroom”* folder it came in.
 - If any of the flashcard folders have been renamed you will not be able to access them. Do NOT rename any folders that came with this presentation. The correct folder names are shown below (capitalization is important here):
- Accidentally hit “Disable Macros”
 - This will stop all of the bonus features from working on the presentation. Usually closing and reopening the presentation will allow you to try again.
 - If the “Disable Macros” question does not show up again, you may need to re-download the presentation.
- Videos won’t play
 - Make sure the video has been downloaded in a supported format (.mp4 is ideal)
 - Make sure the video is in the *“Videos”* folder.

- Even if you can't see the video from the edit view (you see a blank yellow slide instead), that is ok, the yellow square will disappear when the computer is clicked on.
- Posters not displaying
 - Make sure the posters are in pdf formats (images will work too, but pdfs are ideal)
 - Only the first 12 posters will show up
 - Make sure you have clicked the IMSE logo from presenter mode to refresh the posters.
 - Sometimes you will have to open the posterboard to refresh the posters.
- Buttons stopped working
 - This may mean the macros are disabled, reopen the presentation and select "Enable Macros" to prevent this.
 - If macros are enabled but the buttons are still broken, please contact william@newmanedresources.com for assistance.
- Objects not displaying properly
 - If you added your own objects make sure you followed the "[Adding Objects](#)" Instructions above.
- Do I really have to press "Grant-Access" Every time?
 - On newer macs you should only have to press this button 4 times to start a presentation.
 - On older Macs you will have to grant access the first time any new images are used, eventually you will not have to do this.
- Classroom Crashed
 - If you are unable to reopen the classroom please contact William@newmanedservices.com for assistance.

Please email william@newmanedservices.com for any problems you are unable to fix and we will try to get back to you as soon as possible.

Appendix

List of Syllable Division Lessons

L1: VC/CV Compound Words with Closed (Cl) & Closed (Cl) Syllables

sun|set cl cl
Bat|man cl cl
cat|fish cl cl
for|get cl cl
up|set cl cl
bob|cat cl cl
can|not cl cl
dish|pan cl cl
can|can cl cl
sun|lit cl cl

L2: VC/CV Two Syllable Words with Closed (Cl) and Open (O) Syllables

mot|to cl o
las|so cl o
ban|jo cl o
lim|bo cl o
Jel|lo cl o
hel|lo cl o
gum|bo cl o
al|to cl o
hip|po cl o
dit|to cl o

L3: V/CV Two Syllable Words with Closed (Cl) & Open (O) Syllables

lo|tus o cl
ma|son o cl
la|tex o cl
to|ken o cl
ha|lo o o
bo|gus o cl
cre|do o o
po|lo o o
tri|pod o cl
ve|to o o

L4: Initial 'r' blends

pil|grim cl cl
grem|lin cl cl
kin|dred cl cl
crim|son cl cl
hun|dred cl cl
trod|den cl cl
fres|co cl o
grif|fin cl cl
en|trap cl cl
pres|to cl o

L5: Initial 'l' blends

em|blem cl cl
clas|sic cl cl
splen|did cl cl
plum|met cl cl
plas|tic cl cl
flip|flop cl cl
glu|ton o cl
com|plex cl cl
in|flux cl cl
clip|clap cl cl

L6: Initial 's' blends

smit|ten cl cl
in|step cl cl
in|still cl cl
mis|spell cl cl
skil|let cl cl
scan|dal cl cl
skep|tic cl cl
stuc|co cl o
snap|shot cl cl

snap|chat cl cl

L7: Final 'st' blends

en|list cl cl
tem|pest cl cl
con|test cl cl
in|vest cl cl
un|rest cl cl
dis|gust cl cl
dis|trust cl cl
con|sist cl cl
den|tist cl cl
in|fest cl cl

L8: Final 'nt' blends

in|tent cl cl
in|dent cl cl
pig|ment cl cl
dis|tant cl cl
fig|ment cl cl
in|stant cl cl
ad|vent cl cl
sol|vent cl cl
com|ment cl cl
ab|sent cl cl

L9: Final 'pt' ad 'ct' blends

dis|rupt cl cl
wind|swept cl cl
in|tact cl cl
in|sect cl cl
con|tact cl cl
col|lect cl cl
in|fect cl cl
pros|pect cl cl
sub|tract cl cl
con|nect cl cl

L10: Other Blends

Fin|land cl cl
stand|still cl cl
sus|pend cl cl
num|skull cl cl
pump|kin cl cl
wind|mill cl cl
in|sult cl cl
ex|pand cl cl
musk|rat cl cl
com|mend cl cl

L11: VC/CV and V/CV with Open and Closed Two Syllable Review

for|get cl cl
Jel|lo cl o
la|tex o cl
fres|co cl o
com|plex cl cl
in|still cl cl
dis|gust cl cl
ad|vent cl cl
pros|pect cl cl
sus|pend cl cl

L12: VC/CV and V/CV with Open and Closed Three Syllables with and without Blends

At|lan|tic cl cl cl
fan|tas|tic cl cl cl
ho|gob|lin cl cl cl
Wis|con|sin cl cl cl
ac|ro|bat cl o cl
oc|to|pus cl o cl
dip|lo|mat cl o cl
bom|bas|tic cl cl cl
ag|nos|tic cl cl cl
es|pres|so cl cl o

L13: 'ng'/'nk' Endings

ring|let cl cl
long|hand cl cl
ank|let o cl
bank|rupt cl cl
plank|ton cl cl
ham|string cl cl
Frank|lin cl cl
king|pin cl cl
mus|tang cl cl
chip|munk cl cl

L14: Suffix '-ed'

lan|ded cl cl
mel|ted cl cl
ja|ded o cl
frus|tra|ted cl o cl
com|mit|ted cl cl cl
a|dop|ted o cl cl
in|dis|posed cl cl cl
re|laxed o cl
fam|ished cl cl
hap|pened cl cl

L15: Third Syllable Type: Magic E

con|trive cl me
com|bine cl me
dis|like cl me
trom|bone cl me
cup|cake cl me
in|sane cl me
e|lope o me
gre|nade cl me
de|bate o me
il|lus|trate cl cl me

L16: Third Syllable Pattern: VC/V

ca|bin cl cl
pa|nic cl cl
re|lic cl cl
men|u cl o
vom|it cl cl
sa|tin cl cl
Span|ish cl cl
pro|ject cl cl
dif|fi|cult cl cl cl
vol|ca|no cl o o

L17: 'ph'

el|e|phant cl cl cl
pho|neme o me
pho|to o o
pho|to|graph o o cl
Phil|lip cl cl
pro|phet cl cl
pam|phlet cl cl
dol|phin cl cl
Mem|phis cl cl
tel|e|phone cl cl me

L18: Fourth Syllable Type: Vowel Team: 'ea'

meal|time vt me
mean|est vt cl
mis|treat cl vt
pea|nut vt cl
tea|cup vt cl
im|peach cl vt
de|feat o vt
de|mean o vt
re|treat o vt
crab|meat cl vt

L19: Fourth Syllable Type: Vowel Team: 'oa'

case|load me vt
coast|line vt me

in|road cl vt
en|croach cl vt
oat|meal vt vt
pea|coat vt vt
soap|box vt cl
re|load o vt
co|coa o vt
cross|road cl vt

L20: Fourth Syllable Type: Vowel Team: 'ai'

main|stream vt vt
con|tain cl vt
ob|tain cl vt
ac|claim cl vt
re|tain o vt
bob|tail cl vt
e|mail o vt
ex|plain cl vt
tail|gate vt me
pain|ful vt cl

L21: Fourth Syllable Type: Vowel Team: 'ee'

dis|creet cl vt
in|deed cl vt
fif|teen cl vt
cof|fee cl vt
tee|pee vt vt
off|screen cl vt
Ten|nes|see cl cl vt
re|deem o vt
be|tween o vt
bee|line vt me

L22: Fourth Syllable Type: Vowel Team: 'ay'

sub|way cl vt
es|say cl vt
Sun|day cl vt
dis|may cl vt
dis|play cl vt
cray|fish vt cl
may|be vt o
play|time vt me
free|way vt vt
hay|ride vt me

L23: Fourth Syllable Type: Vowel Team: 'oe'

doe|skin vt cl
roe|buck vt cl
ros|coe cl vt
tip|toe cl vt
toe|nail vt vt
o|boe o vt
pe|koe o vt
a|loe cl vt
woe|ful vt cl
toe|cap vt cl

L24: Fifth Syllable Type: Bossy R: 'er'

ad|vert cl br
ant|ler cl br
ot|ter cl br
af|ter|time cl br me
ver|min br cl
bea|ver vt br
her|mit br cl
in|fer|no cl br o
blun|der cl br
ter|mi|nate br cl me

L25: Fifth Syllable Type: Bossy R: 'ir'

bird|bath br cl
birth|stone br me
hum|ming|bird cl cl br
red|shirt cl br
thir|teen br vt

un|der|shirt cl cl br
e|lix|er o cl br
as|prin cl br
skir|mish br cl
con|firm cl br

L26: Fifth Syllable Type: Bossy R: 'ur'

dis|turb cl br
sur|vive br me
tur|ban br cl
mur|mur br br
bur|den br cl
curb|side br me
o|ver|tun o br br
hur|ri|cane br cl me
frank|fur|ter cl br br
ham|bur|ger cl br br

L27: Fourth Syllable Pattern: V/V

po|et o cl
po|em o cl
cre|ate o me
cam|e|o cl o o
vi|de|o cl o o
di|a|lect o cl cl
o|a|sis o cl
vi|o|lent o cl
di|ag|nose o cl me
ro|de|o o o o

L28: Sixth Syllable Type: Diphthongs: 'ow'

bell|flow|er cl dt br
cow|girl dt br
cow|er dt br
tow|el dt cl
down|grade dt me
flow|er dt br
show|er dt br
pow|der dt br
vow|el dt cl
me|ow o dt

L29: Sixth Syllable Type: Diphthongs: 'ou'

bad|mouth cl dt
back|out cl dt
bail|out vt dt
com|pound cl dt
count|down dt dt
de|vout o dt
dis|count cl dt
out|line dt me
pro|found o dt
pro|noun o dt

L30: 'igh'

high|way igh vt
night|light igh igh
flash|light cl igh
high|ness igh cl
night|mare igh me
twi|light o igh
lime|light me igh
spot|light cl igh
brigh|ten igh cl
frigh|ten high cl

L31: Seventh Syllable Type: Consonant 'le;

muz|zle cl c-le
puz|zle cl c-le
ket|tle cl c-le
am|ple cl c-le
tod|dle cl c-le
la|dle o c-le
lit|tle cl c-le

ap|ple cl c-le
ex|am|ple cl cl c-le
bam|boo|zle cl vt c-le

L32: Fifth Syllable Type: Bossy R: 'ar'

car|bon br cl
car|pet br cl
mar|ket br cl
gar|den br cl
mar|lin be cl
gar|lic br cl
gar|net br cl
ar|cher br br
sar|cas|tic br cl cl
mar|ma|lade br cl me

L33: Fifth Syllable Type: Bossy R: 'or'

tor|so br o
or|bit br cl
vor|tex br cl
men|tor cl br
trac|tor cl br
bor|der br br
or|nate br me
tor|na|do br o o
Or|lan|do br cl o
mis|for|tune cl br me

L34: Sixth Syllable Type: Diphthongs: 'aw'

with|draw cl dt
aw|ful dt cl
saw|mill dt cl
see|saw vt dt
jig|saw cl dt
raw|hide dt me
out|law dt dt
mo|hawk o dt
craw|fish dt cl
un|law|ful cl dt cl

L35: Sixth Syllable Type: Diphthongs: 'au'

au|thor dt br
Au|stin dt cl
au|to|mat dt o cl
gaunt|let dt cl
cau|cus dt cl
laun|der dt br
sau|cer dt cl
au|then|tic dt cl cl
as|tro|naut cl o dt
au|to|graph dt o cl

L36: Sixth Syllable Type: Diphthongs: 'oi'

ex|ploit cl dt
as|ter|oid cl br dt
poi|son dt cl
de|void o dt
re|coil o dt
del|toid cl dt
tin|foil cl dt
tur|moil br dt
sir|loin br dt
em|broi|der cl dt br

L37: Sixth Syllable Type: Diphthongs: 'oy'

en|joy cl dt
tom|boy cl dt
em|ploy cl dt
oy|ster dt br
de|coy o dt
roy|al dt cl
cow|boy dt dt
al|loy cl dt
dis|loy|al cl dt cl

em|play|al cl dt cl

L38: Additional Lists: Hard and soft 'c'/'g' and 'y' as a vowel

ci|gar cl br
de|cide o me
pro|ceed o vt
ram|page cl me
ur|gent br cl
di|git cl cl
fan|cy cl cl
bi|cy|cle o cl c-le
al|ler|gy cl br cl
sau|cy dt cl

List of Phoneme/Grapheme Pictures

- 01_c: candy, cards, cat, cow, car, coins
- 02_o: ostrich, olive, octopus, officer, Pocket, rocket, dog, mop, frog
- 03_a: apple, alligator, atom, Alabama, anaconda, trash, cat, tattoo, rat, bag,
- 04_d: dirt, dog, dolphin, donuts, door, ladder, Friday, underwear, sad, food, wood, mud, road,
- 05_g: gift, girl, goat, gold, dragon, magazine, log, frog, tag, bug,
- 06_m: man, map, milk, money, monkey, llama, family, woman, gum, dam, mom, ham,
- 07_l: leg, lemon, lightbulb, lion, log, Jello, umbrella, yellow, salad, volleyball, Jail, pencil, pail, feel, peel
- 08_h: hand, hat, honey, horse, house,-
- 09_t: table, ten, tent, tiger, toes, water, kitten, Rat, cat, pot, night, rabbit,
- 10_i: igloo, inch, itch, pills, pillows, milk, gift, shrimp, fish,
- 11_j: jail, jeep, Jello, juggle, jump rope,
- 12_k: ketchup, key, king, kite, key
- 13_p: panda, pants, pencil, pillows, pills, apple, zipper, map, soup, ship, stop, mop,
- 14_ch: check, chair, chess, chips, chicken,
- 15_u: umbrella, underwear, up, Cup, juggle, gum, jump rope
- 16_b: : baseball, bear, bee, bee, boat, bubbles
- 17_r: rabbit, rake, red, road, rock,
- 18_f: family, fire, fish, foot, four, frog
- 19_n: nachos, nail, nest, nose, nuts
- 20_e: Egg, elephant, elf,
- 21_s: sad, salad, sandwich, soccer ball, soup
- 22_sh: shadow, shell, shark, sheep, ship, shower,
- 23_v_th: Mother, father, feather
- 24_w: water, well, wolf, woman, wood,
- 25_wh: Whip, whale, whistle, wheel, wheat, whipped cream,
- 26_y: yak, yarn, yellow, Yoda, yoyo,
- 27_v: vampire, vase, vest, violin, volleyball,
- 28_x: fox, ox, box, Saxophone,
- 29_z: zebra, zigzag, zipper, zombie, zucchini,
- 30_uv_th: thumb, thimble, theatre, bathtub, math, moth, tooth, bath
- 31_qu: quarter, question, queen, quilt, quiz,
- 32_ff: Staff, cliff, off, stuff
 - 32_ll: skull, doll, dull, pill, skill, drill
- 32_ss: Kiss, boss, dress, chess, mess
- 32_zz: Buzz, fuzz,
- 33_br: Bread, brain, brick, broom, bridge,
- 33_cr: Crate, crow, crab, cry, crown,
- 33_dr: Drum, drill, dress, dragon, dragonfly,
- 33_fr: Frog, fries, fruit, fridge, friends,
- 33_gr: Grape, green, grill, grandpa, grass,
- 33_pr: Pretty, prince, pretzel, print, prize, Apron, April,
- 33_scr: scroll, screen, skyscraper, scratch, Sunscreen,
- 33_shr: shrimp, shrink, shrug, shrine,
 - 33_w: spring, sprinkles, sprout
- 33_str: String, straw, street, strong, stripes,
- 33_thr: throw, throne, three, thread,
- 33_tr: Trap, truck, train, trash, trophy, ostrich, nostril
- 34_bl: blue, black, blood, blimp, blanket
- 34_cl: cloud, clown, cliff, clock, clipboard,
- 34_fl: flower, flamingo, fly, flag, floor,
- 34_gl: glue, glitter, gloves, glass, globe, Igloo
- 34_pl: plum, plus, plate, plane, planet, plug,
- 34_sl: slide, slug, sloth, slime, sleep,
- 34_spl: Splits, split, splinter, splash,
- 35_sc: Scarecrow, scar, scuba, scale, scooter, disco, mascot,
- 35_sk: skeleton, ski, sky, skull,
- 35_sm: small, smile, smoke, smell, smart,
- 35_sn: snail, snow, snot, snake, sneeze, sneaker,
- 35_sp: spy, spit, spot, spear, sports, spoon, spine,
- 35_squ: Squid, square, squirrel, squat, squash ,
- 35_st: Stairs, standing, star, steak, stamp, stool, stove,
- 36_dw: Dwarf,

- 36_sw: swan, swim, swamp, swiss, switch, sweater,
- 36_tw: twins, twitter, twenty, twelve,
- 37_-ct: act, insect, contact, Duct tape,
- 37_-ft: Raft, left, gift, lift, forklift,
- 37_-lt: Belt, bolt, salt, quilt, vault, adult ,
- 37_-nt: Ant, cent, tent, mint, paint, plant, giant,
- 37_-pt: Wept, erupt, swept,
- 37_-st: East, toast, west, vest, fist, wrist, chest, ghost,
- 37_-xt: Text, next,
- 37_suffix_-ed: - no words
 - 38_-ld: old, bald, cold, gold, fold
- 38_-lf: Elf, golf, shelf, wolf,
- 38_-lk: Milk, talk, hulk, walk, yolk, chalk,
- 38_-lp: Kelp,
- 39_-mp: Camp, dump, lamp, bump, stamp, swamp, chimp,
- 39_-nch: Inch, lunch, bench, punch, grinch, French, wrench,
- 39_-nd: ampersand, hand, sand, wind, wand, stand, sound
- 39_-sk: Disk, mask, desk, asterisk, tusk,
- 39_-sp: Wasp, clasp,
 - 40_ang: Fang, sang, rang,
- 40_ing: Sing, king, swing, ring, wing
- 40_ong: Gong, ping pong, long, tong, strong,
 - 40_ung: Lung
- 41_ank: Bank, tank
- 41_ink: Sink, ink, pink, oink, wink,
- 41_onk: honk,
- 41_unk: Trunk, junk, dunk, skunk, shrunk
- 43_a-e: Frame, cane, tape, cake, skate, plane, make
- 43_e-e: here
- 43_i-e: Pine, kite, lime, dime, mime,
- 43_o-e: Robe, stove, rose, bone, hole, smoke, phone,
- 43_u-e: Cube, flute, tube, tune
- 44_ph: Phone, graph, photo, trophy, dolphin, alphabet,
- 45_ck: Check, deck, truck, rock, neck, duck, black,
- 46_ea: eat, Beans, peach, leaf, meatsea, tea, flea,
- 47_oa: Oat, oak, Boat, coat, goat, coal, road, toast,
- 48_ai: first aid, Tail, mail, rain, jail, paint, train
- 49_ee: eel, bee, feet, beet, jeep, deer, knee, tree, tee
- 50_ay: Day, gray, play, tray
 - 51_oe: Toe, hoe, doe
- 52_er: Fern, water, tiger, river, flower,
- 53_ir: bird, girl, dirt, birthday, skirt, shirt, birthday, circle,
- 54_ur: fur, surf, curl, burger, turkey, purple,
- 55_ow: Cow, brow, frown, brown, vowel, crown
- 56_ou: loud, south, couch, mouth,
- 57_igh: High, night, knight, right, lightbulb, thigh,
- 58_ble: Table, cable, marble, bubble, thimble
- 58_cle: circle, icicle, recycle, tentacle
- 58_dle: Candle, noodle, needle, saddle, ladle,
- 58_fle: Rifle, waffle, shuffle, ruffle
- 58_gle: Eagle, angle, juggle, jungle, triangle, goggle,
- 58_kle: Ankle, sprinkle, pickle, freckle, wrinkle,
- 58_ple: Apple, pimple, staple, purple, pineapple,
- 58_tle: turtle, bottle, beetle, whistle
- 58_zle: Puzzle, nozzle,
 - 59_ar: Arch, art, bar, star, far, Marble, farmer, target, guitar
- 60_or: Orange, fort, short, Portal, forest
- 61_oo: Book, cook, wood, hood, good, zoo, tattoo, boot, moon, igloo, tooth,
- 62_y: Sky, cry, fly, pony, baby, happy, family, candy
- 63_ca: - no words
- 63_ce: - no words
- 63_ci: - no words
- 63_co: - no words
- 63_cu: - no words
- 63_cy: - no words
- 64_ga: - no words
- 64_ge: - no words
- 64_gi: - no words
- 64_go: - no words
- 64_gu: - no words
- 64_gy: - no words
- 65_dge: judge, bridge, fridge, fudge
- 66_aw: Saw, draw, lawnmower, straw,
- 67_au: Vault, sausage,
- 68_oi: Coin, oink, oil, boil, foil, toilet, point, poisonous,
- 69_oy: Toy, boy, royal, oyster,
 - 70_tch: Match, catch, latch, switch
- 71_ew: Screw, newspaper, jewelry,

- 72_eu: Feud, neutral, queue
- 73_ei: vein, rein, veil, Ceiling, receipt
- 74_ie: Zombie, field, thief
- 75_ue: blue, glue, tissue,
- 76_tion: Vacation, question, fraction, addition, subtraction,
- 77_sion: Mansion, division, explosion,
- 78_ey: Honey, gooey, money, monkey, turkey,
- 79_ous: serious, poisonous, fabulous, humongous
- 79_us: Cactus, virus, minus, octopus,